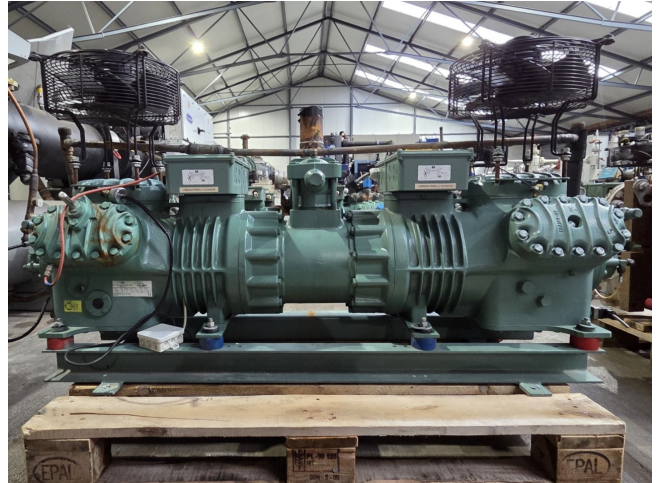


Bitzer 66H-50.2 Y / 6H-25.2 Y (x2)

Specifications

Marka	Bitzer
Typ	66H-50.2 Y / 6H-25.2 Y (x2)
Czynnik chłodzący	Freon
kW at -5°C/+40°C	149,3
kW at -10°C/+40°C	123,1
kW at -20°C/+40°C	80,7
kW at -30°C/+40°C	49,4
kW at -40°C/+40°C	26,9
kW at -45°C/+40°C	18,3
Rozładunek	✓
Podstawa na stalowej ramie	✓
Ciśnieniowe przełączniki bezpieczeństwa	✓
Okno widokowe	✓
m ³ / h	221
Waga kg.	483
Rozmiary	1600x550x850 mm (LxWxH)
Stock	1



Description

Used Bitzer 66H-50.2 Y / 6H-25.2 Y (x2)

Used Bitzer 66H-50.2 Y semi-hermetic reciprocating tandem compressor on Freon. Complete with a Bitzer 6H-25.2 Y (x2) semi-hermetic reciprocating compressors, 2 Ziehl-Abegg FE031-4DZ.0C.3 fans - 0,12/0,19 kW - 1410/1670 RPM - 50/60 Hz, pressure safety switches and sight glasses. The compressor has a displacement of 221,0 m³/h at 50 Hz and 266,6 m³/h at 60 Hz.

*Why choose for HOSBV? We are not only the largest used refrigeration specialist in Europe, but also, we deliver all equipment including an extensive test, warranty and industrial cleaning. *If requested we are happy to arrange your logistics.

